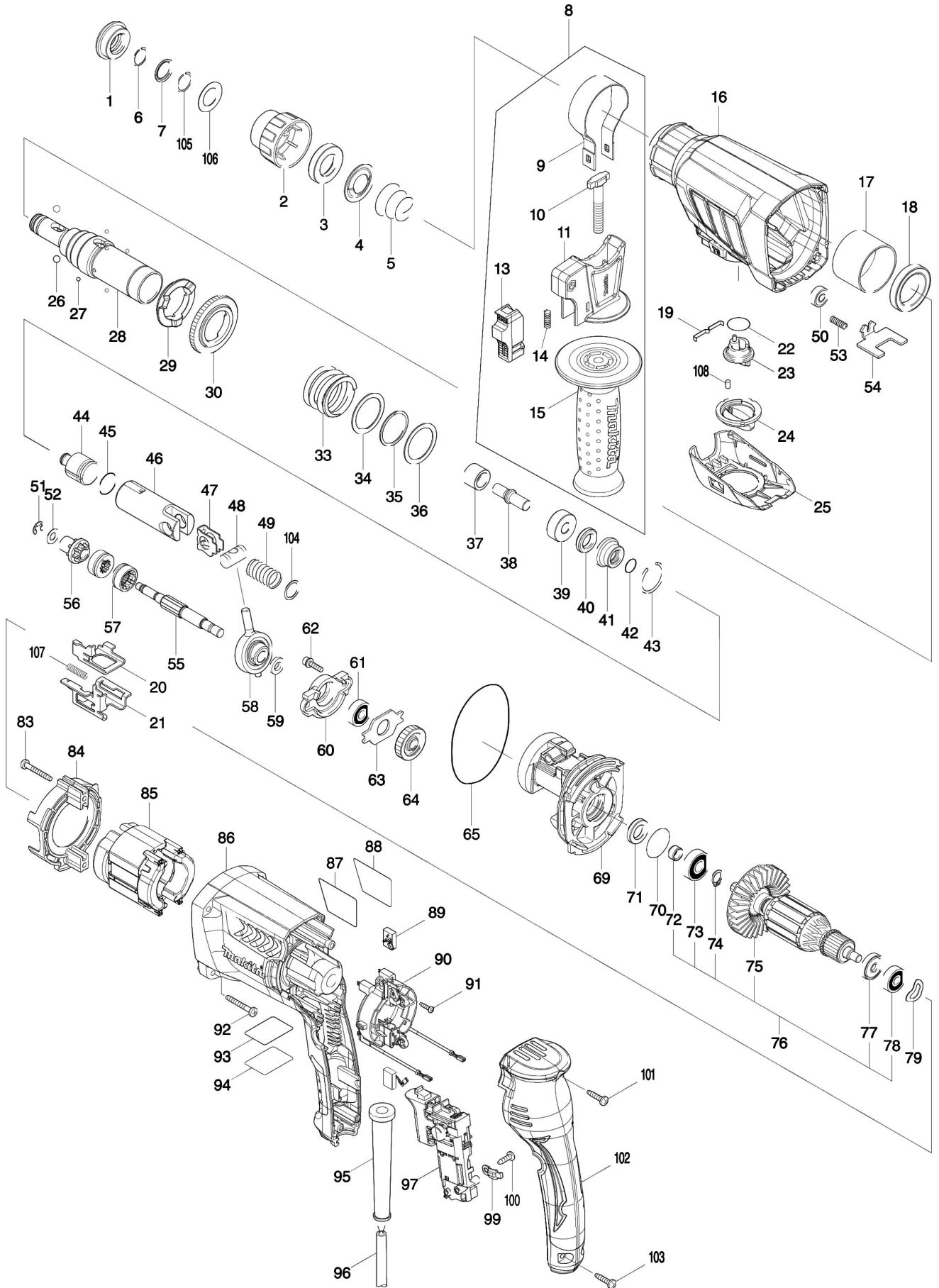


Partdrawing for HR2630J - Combihamer



| Nr. | Part nr. | Name |
|------|----------|-------------------------------|
| 001 | 286288-8 | Rubber Stofkap 35 Hr2300 |
| 002 | 455393-4 | Beitelblokkeerkap Hr2630/31 A |
| 003 | 325813-1 | Blokkeerring 21 Hr2300 |
| 004 | 346177-0 | Geleidering Hr2300 |
| 005 | 233916-6 | Drukveer 21-29 Hr2440/50 |
| 006 | 233989-9 | Veerring 14 Hr2300 |
| 007 | 346834-0 | Sluitrevet 16Mm Hr2631F |
| 008 | 122878-2 | Zijhandgreep combihamer |
| 009 | 346181-9 | Handgreepbeugel (122878-2) P |
| 010 | 266349-0 | Bout Tbv Handgreep P |
| 011 | 451539-0 | Gripbasis (122878-2) Hr2300 P |
| 013 | 141765-6 | Blokkeerknop Cmpl Hr2630* |
| 014 | 233360-7 | Drukveer 4 Hr23/2600 |
| 015 | 154935-8 | Handgreep Bdf454 P |
| 016 | 142971-6 | Tandwielhuis Hr2630F |
| 016A | 213636-8 | Keerring (Olie) 25 Hr2460 |
| 017 | 331890-3 | Bus Hr2300 |
| 018 | 211294-4 | Kogellager 6806Llu |
| 019 | 232286-0 | Bladveer Hr2631F |
| 020 | 346833-2 | Wisselplaat B Hr2631F |
| 021 | 346832-4 | Wisselplaat A Hr2631F |
| 022 | 213278-8 | O-Ring 17 Hr2440/50 |
| 023 | 455392-6 | Verstelknop Hr2631 |
| 024 | 455394-2 | Beitelblokkeerkap Hr2630/31 |
| 025 | 455391-8 | Afdekkap Hr2631F |
| 026 | 216022-2 | Stalen Kogel 7.0 Hr2400 |
| 027 | 216019-1 | Stalen Kogel 3 P |
| 028 | 142973-2 | Boor/Beitelhouder Hr2630 A |
| 028A | 213344-1 | Keerring 9 Hr2811 A |
| 029 | 332139-4 | Aandrijfflens Hr2300 A |
| 030 | 227360-7 | Tandwiel 51 Hr2300 A |
| 033 | 234148-8 | Drukveer 31Mm Hr2300 |
| 034 | 267153-0 | Sluitring 30 Hr2300 |
| 035 | 257932-4 | Borgring Spiro30 Hr2300 |
| 036 | 267153-0 | Sluitring 30 Hr2300 |
| 037 | 325782-6 | Bus 9A Hr2300 |
| 038 | 325789-2 | Slagstuk A Hr2300 |
| 039 | 325794-9 | Vulring 10A Hr2300 |
| 040 | 424267-0 | Stootring 12 Hr2300 |
| 041 | 325798-1 | O-Ring Huis A Hr2300 |
| 042 | 213073-6 | O-Ring 9 Hr2440/50 |
| 043 | 233979-2 | Veerring 28 Hr2300 |
| 044 | 325784-2 | Slaghamer Hr2300 |
| 045 | 213258-4 | O-Ring 17.5 |
| 046 | 310345-1 | Zuiger-Cilinder Hr2300 |
| 047 | 346036-8 | Geleidingsplaat Bhr261Rde |

| Nr. | Part nr. | Name |
|-------|----------|------------------------------|
| 048 | 324215-8 | Zuigerpen Hr2440/50 A |
| 049 | 234098-7 | Drukveer 14 Bhr261Rde |
| 050 | 210137-7 | Kogellager 606Zz A |
| 051 | 257336-0 | Stopring Ext U6 Bhr242 |
| 052 | 253186-1 | Sluitring 7 BSS610 P |
| 053 | 233360-7 | Drukveer 4 Hr23/2600 |
| 054 | 346831-6 | Blokkeerplaat Hr2631F |
| 055 | 326448-1 | Tandwielas Hr2631F |
| 056 | 227359-2 | Tandwiel 10 Hr2630/31 |
| 057 | 332125-5 | Koppelingsplaat Hr2631F |
| 058 | 219014-0 | Schommellager 10 Bhr200 A |
| 059 | 257321-3 | Ring 8 Mt870 |
| 060 | 310344-3 | Lagerhuis Hr2300 |
| 061 | 210046-0 | Kogellager 608Zz A |
| 062 | 266437-3 | Inbusbout M4X16 A |
| 063 | 285735-6 | Lagerborging Hr2300 |
| 064 | 227719-8 | Tandwiel 26 Hr2300 |
| 065 | 213728-3 | O-Ring 68 |
| 069 | 141572-7 | Binnenhuis Hr2300 A |
| 069A | 443153-6 | Dempingsvilt Hr2300 |
| 070 | 213407-3 | O-Ring 26 A |
| 071 | 213678-2 | Keerring 12Mm Hr3210Ft A |
| 072 | 262569-4 | Bus 9 Hr2300 |
| 073 | 211061-7 | Kogellager 6000Lib A |
| 074 | 961006-2 | Borgring S-10 EBH341L P |
| 075 | 240121-8 | Waaier 65 Hr2300 |
| 076 | 515359-7 | Anker 240V Hr2600 |
| 077 | 681652-2 | Isolatieing Jr180D |
| 078 | 210045-2 | Kogellager 627Ddw A |
| 079 | 267804-5 | Borgring 15 DLS211Z A |
| 083 | 266361-0 | Tap Schroef 4X30Mm 9554Nb |
| 083-1 | 265B70-0 | Tapschr 4x30mm DGA520 |
| 084 | 451527-7 | Tussenplaat Hr2300 |
| 085 | 626634-7 | Veld Hr2600 |
| 086 | 451536-6 | Motorhuis Hr2600 |
| 087 | 850M21-8 | Naamplaat Hr2630 |
| 088 | 819390-8 | BESCHERMLABEL HR2300 # |
| 089 | 194074-2 | Koolborstel Set Cb-325 |
| 090 | 638655-7 | Koolborstelhouder Hr2300 |
| 091 | 266556-5 | Met.Schroef Ck 3X12Mm Hr2300 |
| 092 | 266361-0 | Tap Schroef 4X30Mm 9554Nb |
| 092-1 | 265B70-0 | Tapschr 4x30mm DGA520 |
| 093 | 850M25-0 | Label Serienr Hr2630 |
| 094 | 819389-3 | BESCHERMLABEL HR2300 # |
| 095 | 682566-8 | Kabeltule 10-110 |
| 096 | 695123-3 | Netsnoer 2X1.50 4.0Mtr A |

Partdrawing for HR2630J - Combihamer



| Nr. | Part nr. | Name |
|------------|-----------------|--------------------------------|
| 097 | 651090-2 | Schakelaar Tg853Tb Hr2650/51 A |
| 099 | 687682-1 | Trekontlaster |
| 100 | 266385-6 | Tapschroef 4X14 Ga7020 A |
| 100-1 | 265B74-2 | Tapschr 4x14mm GA9070Y |
| 101 | 266326-2 | Tap Schroef 4X18mm P |
| 101-1 | 265B67-9 | Tapschr 4x18mm DGA520 A |
| 102 | 451528-5 | Handgreepdeksel Hr2300 |
| 103 | 266326-2 | Tap Schroef 4X18mm P |
| 103-1 | 265B67-9 | Tapschr 4x18mm DGA520 A |
| 104 | 267447-3 | Sluitring 14 Hr2300 |
| 105 | 233992-0 | Borgveer 15 Hr2300 |
| 106 | 267114-0 | Sluitring 17 Hr2300 A |
| 107 | 234343-0 | Drukveer 35 Hr2631F |
| 108 | 263005-3 | Rubber Pen 6 AC320H P |