

HIKOKI

BELT SANDER

Item No.	Code No.	Description	No. Used	Remarks
1	327742	PULLEY (A)	1	
2	6000VV	BALL BEARING 6000VVCMP2L	1	
3	327739	DUST GUIDE	1	
*4	360797C	ARMATURE 110V	1	
*4	360797U	ARMATURE ASS'Y 120V	1	INCLUD.2,5
*4	360797E	ARMATURE 220V-230V	1	
*4	360797F	ARMATURE 240V	1	
5	608VVM	BALL BEARING 608VVC2PS2L	1	
6	953174	HEX. HD. TAPPING SCREW D5X55	2	
*7	340700C	STATOR ASS'Y 110V	1	INCLUD.12
*7	340700J	STATOR ASS'Y 110V	1	INCLUD.12 FOR TPE,GBR (110V)
*7	340700D	STATOR ASS'Y 120V	1	INCLUD.12
*7	340700E	STATOR ASS'Y 220V-230V	1	INCLUD.12
*7	340700G	STATOR ASS'Y 220V-230V	1	INCLUD.12 FOR NZL,GBR (230V),EUROPE,NOR, SWE,DEN,AUT,CHN
*7	340700G			
*7	340700F	STATOR ASS'Y 240V	1	INCLUD.12
*7	340700H	STATOR ASS'Y 240V	1	INCLUD.12 FOR AUS
8	935196	MACHINE SCREW (W/WASHERS) M4X12 (BLACK)	4	
9	931701	BEARING LOCK	1	
10	328209	DUST PLATE	1	
11	327738	FAN GUIDE	1	
12	930703	BRUSH TERMINAL	2	
*13	980063	TERMINAL	1	
*13	980063	TERMINAL	2	FOR NZL,AUS,GBR,EUROPE,FIN,NOR,SWE,DEN, AUT,CHN,TPE
*13	980063			
14C	328433	BELT COVER	1	
14C	328433M	BELT COVER	1	FOR USA,CAN,MEX
15	316321	TAPPING SCREW (W/FLANGE) D5X45	4	
16	327740	DUST COVER	1	
16A	376090	DUST COVER	1	FOR GBR,EUROPE
17	327760	HANDLE COVER	1	
18	984750	TAPPING SCREW (W/FLANGE) D4X16	2	
19	937631	CORD CLIP	1	
*20	958049	CORD ARMOR D8.2	1	
*20	940778	CORD ARMOR D10.7	1	
21	327759	HOUSING ASS'Y	1	INCLUD.22,25
22	938477	HEX. SOCKET SET SCREW M5X8	2	
*23	500234Z	CORD	1	(CORD ARMOR D8.2)
*23	500247Z	CORD	1	(CORD ARMOR D8.2) FOR FIN,NOR,SWE,DEN
*23	500432Z	CORD	1	(CORD ARMOR D8.2) FOR USA,CAN
*23	500447Z	CORD	1	(CORD ARMOR D8.2) FOR SYR
*23	500423Z	CORD	1	(CORD ARMOR D8.2) FOR SIN,KUW
*23	500439Z	CORD	1	(CORD ARMOR D8.2) FOR NZL,AUS
*23	500435Z	CORD	1	(CORD ARMOR D8.2) FOR GBR (230V)
*23	500237Z	CORD	1	(CORD ARMOR D8.2) FOR GBR (110V)
*23	500455Z	CORD	1	(CORD ARMOR D8.2) FOR CHN,VEN,THA
*23	323974	CORD	1	(CORD ARMOR D10.7) FOR TPE
24		NAME PLATE	1	
25	958900	BRUSH HOLDER	2	
26	999043	CARBON BRUSH (1 PAIR)	2	
27	945161	BRUSH CAP	2	
28	305812	TAPPING SCREW (W/FLANGE) D4X16 (BLACK)	7	
29A	339021	TRIGGER SWITCH	1	

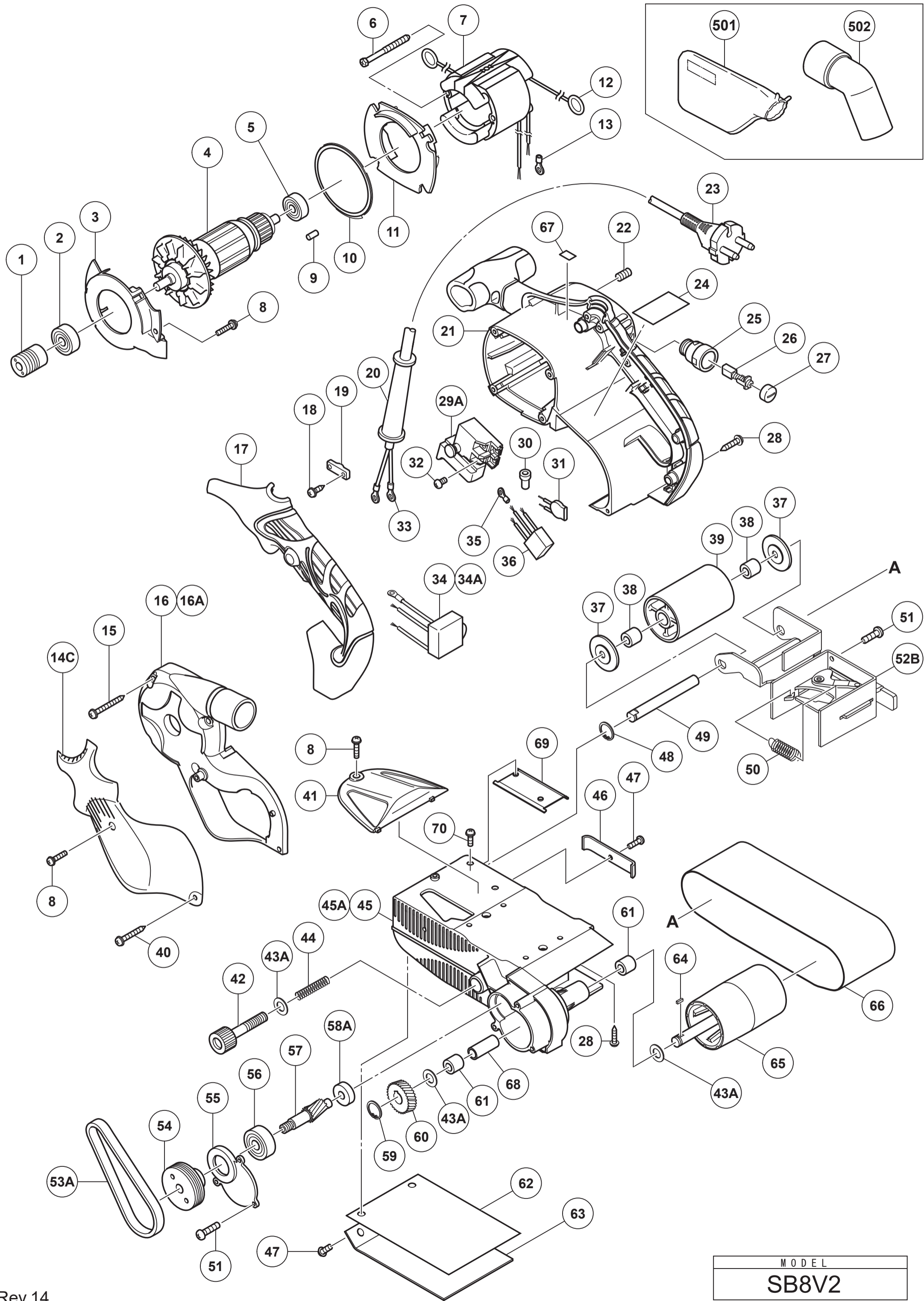
* ALTERNATIVE PARTS

HIKOKI

BELT SANDER

Item No.	Code No.	Description	No. Used	Remarks
30	959140	CONNECTOR 50091 (10 PCS.)	1	
31	328432	VARIATOR	1	FOR GBR, EUROPE, FIN, NOR, SWE, DEN, AUT
32	305499	MACHINE SCREW (W/WASHER) M3.5X6	4	
33	980063	TERMINAL	2	
*34	327757	CONTROLLER 120V	1	
34A	382873	CONTROLLER 100V-110V	1	
34A	382992	CONTROLLER 220V-240V	1	
*35	938108	TERMINAL	1	FOR NZL, AUS, GBR, EUROPE, FIN, NOR, SWE, DEN, AUT, CHN, TPE
*35	938108			
*36	325566	NOISE SUPPRESSOR	1	FOR NZL, AUS, GBR, EUROPE, FIN, NOR, SWE, DEN, AUT, CHN, TPE
*36	325566			
37	953184	WASHER (B)	2	
38	953175	METAL D10X14X12	2	
39	953160	IDLE PULLEY ASS'Y	1	INCLUD. 38
40	305490	TAPPING SCREW (W/FLANGE) D4X30 (BLACK)	1	
41	327744	CLEAR COVER	1	
42	319258	ADJUSTING SCREW	1	
43A	335794	PISTON WASHER	3	
44	953071	SPRING	1	
45	327745	BODY ASS'Y	1	INCLUD. 58, 61, 68
45A	376093	BODY ASS'Y	1	INCLUD. 58, 61, 68 FOR GBR, EUROPE
46	327746	STRIKING GUIDE	1	
47	949216	MACHINE SCREW M4X10 (10 PCS.)	3	
48	939540	RETAINING RING FOR D10 SHAFT (10 PCS.)	1	
49	953162	SHAFT (B)	1	
50	953163	SPRING	1	
51	949218	MACHINE SCREW M4X14 (10 PCS.)	5	
52B	379379	BELT TENSIONER	1	
53A	330690	BELT	1	
54	327749	PULLEY (B)	1	
55	327748	GEAR COVER	1	
56	6200VV	BALL BEARING 6200VVCMP2L	1	
57	327750	PINION	1	
58A	608VVM	BALL BEARING 608VVC2PS2L	1	
59	939540	RETAINING RING FOR D10 SHAFT (10 PCS.)	1	
60	953151	GEAR	1	
61	953175	METAL D10X14X12	2	
62	327752	SHOE CUSHION	1	
63	327751	SHOE PLATE	1	
64	944109	FEATHER KEY 3X3X8	1	
65	327747	DRIVE PULLEY	1	
*66	939732	SANDING BELTS 76X533 WA60 (10 PCS.)	1	FOR VEN, THA, INA, SYR, SIN, KUW, NZL, AUS, SAF, IND
*66	939732			
*66	939733	SANDING BELTS 76X533 WA80 (10 PCS.)	1	
*66	939734	SANDING BELTS 76X533 WA100 (10 PCS.)	1	FOR VEN, THA, INA, SYR, SIN, KUW, NZL, AUS, SAF, IND
*66	939734			
*66	939735	SANDING BELTS 76X533 WA120 (10 PCS.)	1	FOR VEN, THA, INA, SYR, SIN, KUW, NZL, AUS, SAF, IND
*66	939735			
67	328513	DUST SEAL	1	
68	370075	FELT	1	
69	376091	PLATE	1	FOR GBR, EUROPE
70	317200	MACHINE SCREW (W/WASHERS) M4X8 (BLACK)	2	FOR GBR, EUROPE
		STANDARD ACCESSORIES		

* ALTERNATIVE PARTS



MODEL
SB8V2