

# HIKOKI

## CORDLESS ROTARY HAMMER H3641DA

| Item No. | Code No. | Description                            | No. Used | Remarks            |
|----------|----------|--|----------|--------------------|
| 1        | 337562   | FRONT CAP                              | 1        |                    |
| 2        | 318590   | STOPPER RING                           | 1        |                    |
| 3        | 370172   | RETAINER WASHER                        | 1        |                    |
| 4        | 370173   | GRIP                                   | 1        |                    |
| 5        | 337559   | RETAINER DAMPER (A)                    | 1        |                    |
| 6        | 337558   | BIT LOCK HOLDER                        | 1        |                    |
| 7        | 370242   | SPRING HOLDER (A)                      | 1        |                    |
| 8        | 370243   | RETAINER SPRING                        | 1        |                    |
| 9        | 370244   | SPRING HOLDER (B)                      | 1        |                    |
| 10       | 333255   | STOPPER RING                           | 1        |                    |
| 11       | 373288   | BALL HOLDER                            | 1        |                    |
| 12       | 373279   | GRIP (B)                               | 1        |                    |
| 13       | 959150   | STEEL BALL D6.35 (10 PCS.)             | 4        |                    |
| 14       | 981942   | SEAL LOCK HEX. SOCKET HD. BOLT M6X25   | 4        |                    |
| 15       | 373280   | FRONT COVER                            | 1        |                    |
| 16       | 373236   | TOP COVER                              | 1        |                    |
| 17       | 980879   | O-RING (S-34)                          | 2        |                    |
| 18       | 373251   | O-RING (I.D 44.5)                      | 1        |                    |
| 19       | 373281   | RETAINER DAMPER (B)                    | 1        |                    |
| 20       | 370654   | BIT LOCK                               | 2        |                    |
| 21       | 373284   | RETAINER SLEEVE                        | 1        |                    |
| 22       | 373249   | DAMPER (C)                             | 1        |                    |
| 23       | 313396   | O-RING (C)                             | 2        |                    |
| 24       | 373285   | SECOND HAMMER                          | 1        |                    |
| 25       | 373286   | DAMPER WASHER                          | 1        |                    |
| 26       | 321289   | DAMPER                                 | 1        |                    |
| 27       | 373287   | DAMPER HOLDER                          | 1        |                    |
| 28       | 374774   | CYLINDER                               | 1        |                    |
| 29       | 373283   | STRIKER                                | 1        |                    |
| 30       | 320823   | O-RING                                 | 2        |                    |
| 31       | 320824   | PISTON                                 | 1        |                    |
| 32       | 373256   | PISTON PIN                             | 1        |                    |
| 33       | 373275   | CONNECTING ROD                         | 1        |                    |
| 34       | 373234   | HOOD                                   | 1        |                    |
| 35       | 998485   | HEX. SOCKET HD. BOLT (W/FLANGE) M5X14  | 7        |                    |
| 36       | 380928   | HOUSING                                | 1        |                    |
| 37       | 333263   | DUST SEAL                              | 1        |                    |
| 38       | 380932   | DUST SEAL HOLDER                       | 1        |                    |
| 39       | 338194   | WEIGHT BUMPER                          | 6        |                    |
| 40       | 380929   | BACK COVER                             | 1        |                    |
| 41       | 930196   | SUPPORT (B)                            | 1        |                    |
| 42       | 373252   | BELLOWS                                | 1        |                    |
| *43      |          | NAME PLATE                             | 1        |                    |
|          |          |  |          | EXCEPT FOR USA,CAN |
| 44       | 302089   | TAPPING SCREW (W/FLANGE) D5X20 (BLACK) | 3        |                    |
| 45       | 380933   | CONTROLLER ASS'Y                       | 1        | INCLUD. 46, 48     |
| 46       | 380938   | PANEL                                  | 1        |                    |
| 47       | 377279   | FUSE                                   | 1        |                    |
| 48       | 377278   | BATTERY TERMINAL ASS'Y                 | 1        | INCLUD. 47         |
| 49       | 380934   | RUBBER CUSHION                         | 1        |                    |
| 50       | 380931   | TAIL COVER                             | 1        |                    |
| 51       | 380936   | TAPPING SCREW (W/FLANGE) D5X50 (BLACK) | 2        |                    |
| 52       | 379349   | MV LABEL (A) (2)                       | 1        |                    |

\* ALTERNATIVE PARTS

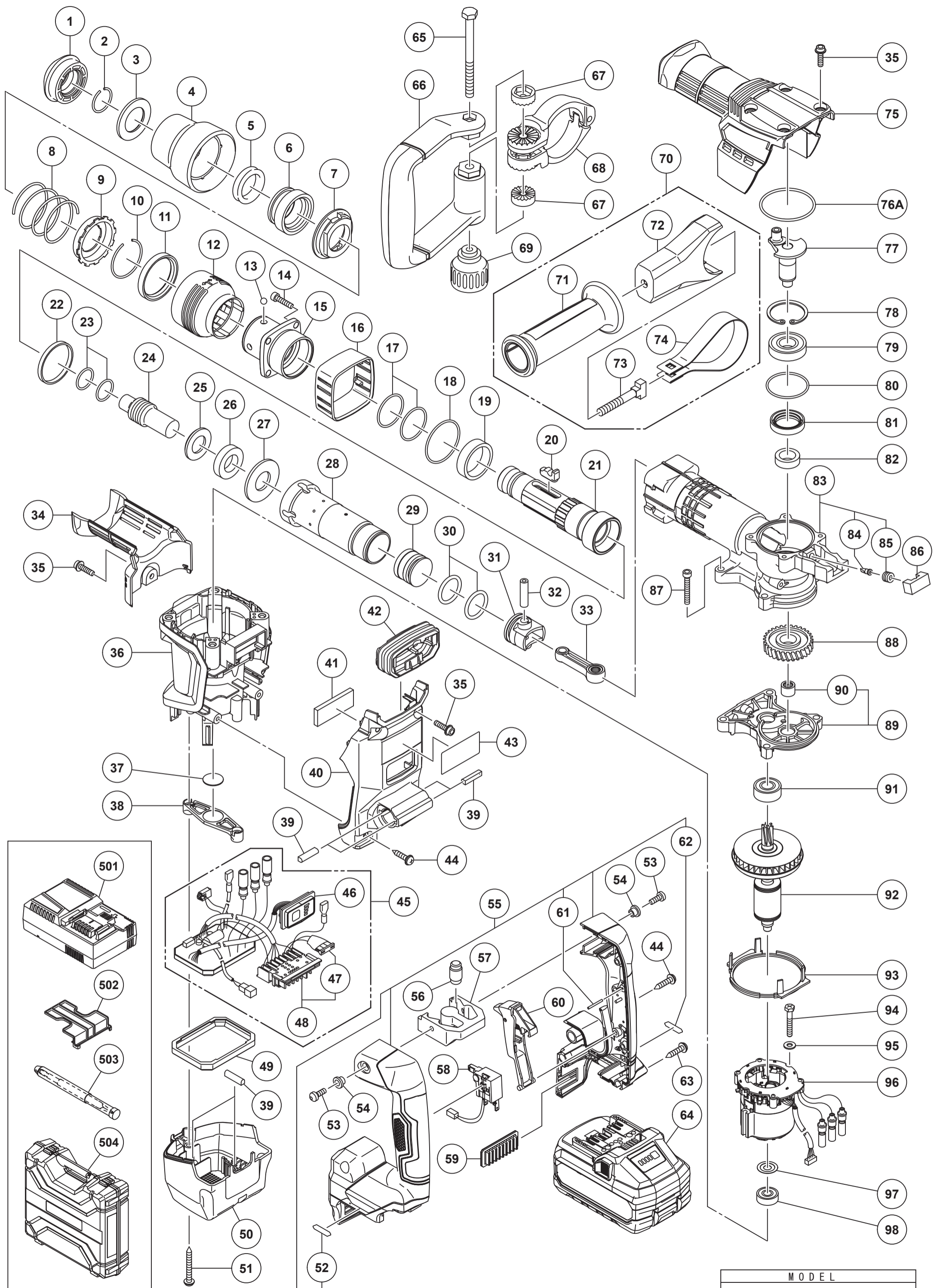
# HIKOKI

## CORDLESS ROTARY HAMMER H3641DA

| Item No. | Code No. | Description                              | No. Used | Remarks                |
|----------|----------|--|----------|------------------------|
| 53       | 373263   | SEAL LOCK BUTTON BOLT M5                 | 2        |                        |
| 54       | 991711   | DISTANCE PIECE (B)                       | 2        |                        |
| 55       | 380930   | HANDLE (A).(B) ASS'Y                     | 1        | INCLUD.52,61,62        |
| 56       | 310124   | HANDLE DAMPER                            | 4        |                        |
| 57       | 373231   | TRANSATORY UNIT                          | 1        |                        |
| 58       | 380935   | SWITCH                                   | 1        |                        |
| 59       | 370328   | BATTERY RUBBER (B)                       | 1        |                        |
| 60       | 373640   | TRIGGER                                  | 1        |                        |
| 61       | 375351   | PIN D2X20                                | 1        |                        |
| 62       | 379350   | MV LABEL (B) (2)                         | 1        |                        |
| 63       | 301653   | TAPPING SCREW (W/FLANGE) D4X20 (BLACK)   | 4        |                        |
| *64      | 380084   | BATTERY BSL 36B18X (EUROPE,AUS,NZL)      | 2        | INCLUD.502             |
| *65      | 333228   | BOLT M8                                  | 1        | FOR EUROPE,GBR,USA,CAN |
| *66      | 333199   | SIDE HANDLE                              | 1        | FOR EUROPE,GBR,USA,CAN |
| *67      | 333202   | HANDLE HOLDER (B)                        | 2        | FOR EUROPE,GBR,USA,CAN |
| *68      | 380898   | HANDLE HOLDER                            | 1        | FOR EUROPE,GBR,USA,CAN |
| *69      | 333201   | GRIP                                     | 1        | FOR EUROPE,GBR,USA,CAN |
| *75      | 374477   | CRANK COVER                              | 1        |                        |
| 76A      | 878372   | O-RING (I.D 52.6)                        | 1        |                        |
| 77       | 373246   | CRANK SHAFT                              | 1        |                        |
| 78       | 948391   | RETAINING RING FOR D40 HOLE              | 1        |                        |
| 79       | 6203DD   | BALL BEARING 6203DDCMPS2L                | 1        |                        |
| 80       | 996363   | O-RING (S-40)                            | 1        |                        |
| 81       | 310119   | OIL SEAL                                 | 1        |                        |
| 82       | 373254   | DISTANCE RING                            | 1        |                        |
| 83       | 373289   | CYLINDER CRANK CASE ASS'Y                | 1        | INCLUD.84,85           |
| 84       | 995396   | VALVE                                    | 1        |                        |
| 85       | 338313   | CAP SCREW                                | 1        |                        |
| 86       | 374461   | FELT                                     | 1        |                        |
| 87       | 322494   | SEAL LOCK HEX. SOCKET HD. BOLT M6X40     | 4        |                        |
| 88       | 373255   | FIRST GEAR                               | 1        |                        |
| 89       | 373271   | GEAR COVER ASS'Y                         | 1        | INCLUD.90              |
| 90       | 378937   | NEEDLE BEARING                           | 1        |                        |
| 91       | 6201DD   | BALL BEARING 6201DDCMPS2L                | 1        |                        |
| 92       | 361233   | ROTOR (B)                                | 1        |                        |
| 93       | 373632   | FAN GUIDE                                | 1        |                        |
| 94       | 373634   | HEX. HD. TAPPING SCREW D4X45             | 2        |                        |
| 95       | 323210   | BOLT WASHER M4 (BLACK)                   | 2        |                        |
| 96       | 341174   | STATOR SENSOR PCB SET                    | 1        |                        |
| 97       | 982631   | WASHER (A)                               | 1        |                        |
| 98       | 608VVM   | BALL BEARING 608VVC2PS2L                 | 1        |                        |
|          |          | STANDARD ACCESSORIES                     |          |                        |
| 501      |          | CHARGER (MODEL UC 18YSL3)                | 1        |                        |
| 502      | 329897   | BATTERY COVER                            | 2        |                        |
| 503      | 313471   | BULL POINT (SDS MAX) 280L                | 1        |                        |
| 504      | 380908   | CASE                                     | 1        |                        |
|          |          | OPTIONAL ACCESSORIES                     |          |                        |
| 601      | 981840   | GREASE (A) FOR HAMMER.HAMMER DRILL (30G) | 1        |                        |
| 602      | 308471   | GREASE FOR HAMMER.HAMMER DRILL (70G)     | 1        |                        |
| 603      | 980927   | GREASE FOR HAMMER.HAMMER DRILL (500G)    | 1        |                        |
| *604     | 313472   | BULL POINT (SDS MAX) 400L                | 1        | EXCEPT FOR USA,CAN     |
| *605     | 313473   | COLD CHISEL (SDS MAX) 280MM              | 1        | EXCEPT FOR USA,CAN     |
| *606     | 313474   | COLD CHISEL (SDS MAX) 400MM              | 1        | EXCEPT FOR USA,CAN     |

\* ALTERNATIVE PARTS





MODEL  
H3641DA