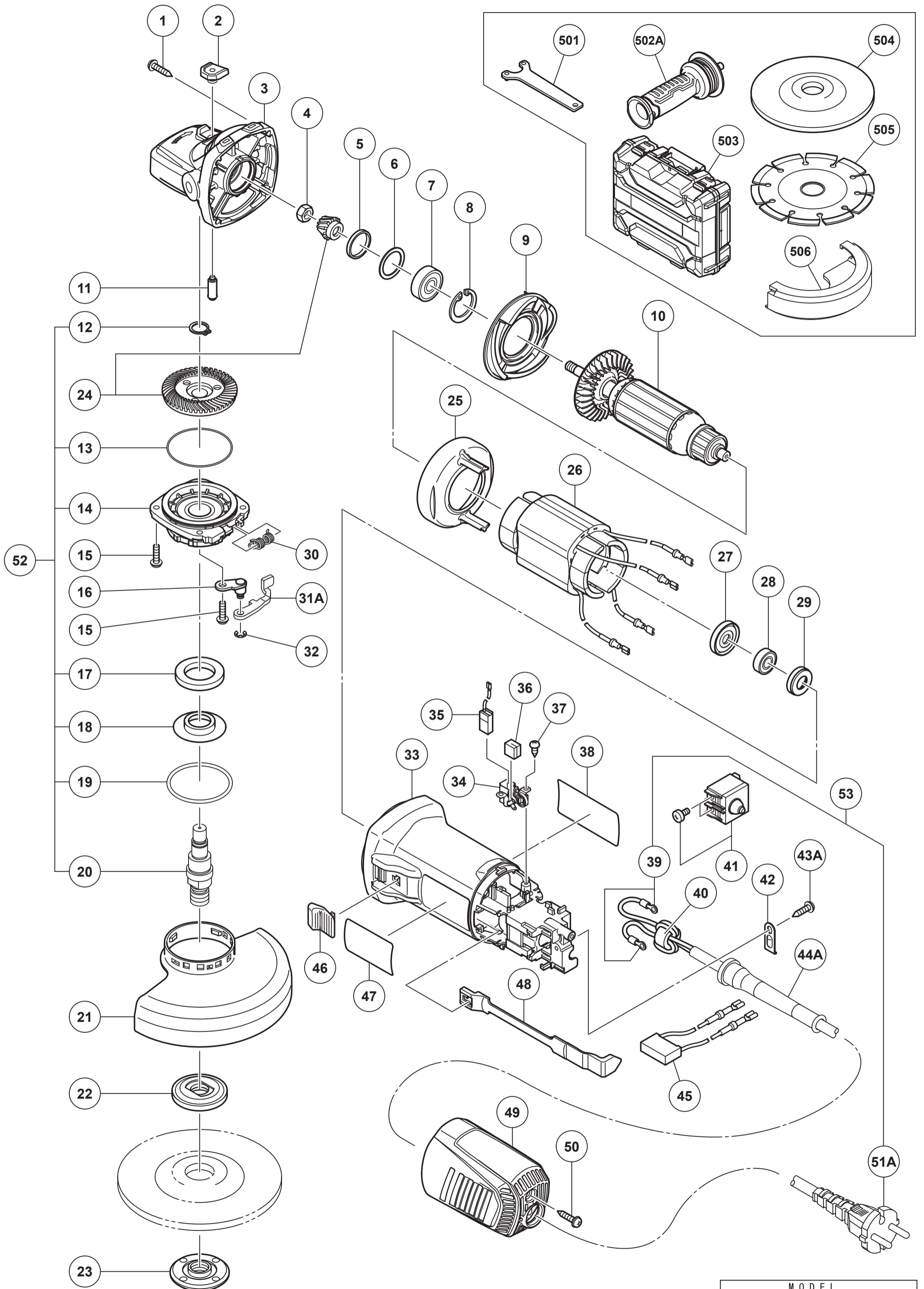


HIKOKI

DISC GRINDER G13SW2

Item No.	Code No.	Description	No. Used	Remarks
1	307028	TAPPING SCREW (W/FLANGE) D4X25 (BLACK)	4	
2	336535	PUSHING BUTTON	1	
3	375889	GEAR COVER	1	INCLUD.2,11
4	301941	SPECIAL NUT M7	1	
5	308543	SEAL RING (A)	1	
6	980866	WASHER (C)	1	
7	629VVM	BALL BEARING 629VV	1	
8	939554	RETAINING RING FOR D26 HOLE (10 PCS.)	1	
9	336542	DIFFUSER	1	
10	360970E	ARMATURE 230V	1	
11	301943	LOCK PIN	1	
12	939542	RETAINING RING FOR D12 SHAFT (10 PCS.)	1	
13	375899	O-RING	1	
14	375887	PACKING GLAND	1	
15	376226	SEAL LOCK SCREW (W/SP. WASHER) M4X14	4	
16	375894	LEVER HOLDER	1	
17	376227	FELT PACKING	1	
18	376228	FRINGER	1	
19	375900	O-RING	1	
20	378660	SPINDLE	1	
21	375904	WHEEL GUARD (LABEL)	1	
22	376067	WHEEL WASHER	1	
23	339579	WHEEL NUT M14	1	
24	375888	GEAR AND PINION SET	1	
25	336530	FAN GUIDE	1	
26	340936E	STATOR 230V	1	
27	336536	DUST SEAL	1	
28	336871	BALL BEARING 698SS	1	
29	309929	RUBBER BUSHING	1	
30	376229	SPRING	1	
31A	379736	LEVER	1	
32	6685336	RETAINING RING D4	1	
33	378268	HOUSING	1	
34	336537	BRUSH HOLDER	2	
35	999088	CARBON BRUSH (1 PAIR)	2	
36	336872	CUSHION SPONGE	2	
37	328210	TAPPING SCREW D3X8	4	
38		NAME PLATE	1	
39	980063	TERMINAL	2	
40	334379	FERRITE CORE	1	
41	376230	PUSHING BUTTON SWITCH 220V-240V	1	
42	937631	CORD CLIP	1	
43A	984750	TAPPING SCREW (W/FLANGE) D4X16	1	
44A	380090	CORD ARMOR D8.8	1	
45	375898	NOISE SUPPRESSOR	1	
46	314428	SLIDE KNOB	1	
47		BRAND LABEL	1	
48	378269	SLIDE BAR	1	
49	370047	TAIL COVER	1	
50	301653	TAPPING SCREW (W/FLANGE) D4X20 (BLACK)	1	
51A	500492Z	CORD	1	(CORD ARMOR D8.8)
52	381994	PACKING GLAND GEAR ASS'Y	1	INCLUD.12-14,17-20,24
53	381998	CORD ASS'Y	1	INCLUD.39,51A

* ALTERNATIVE PARTS



MODEL
G13SW2