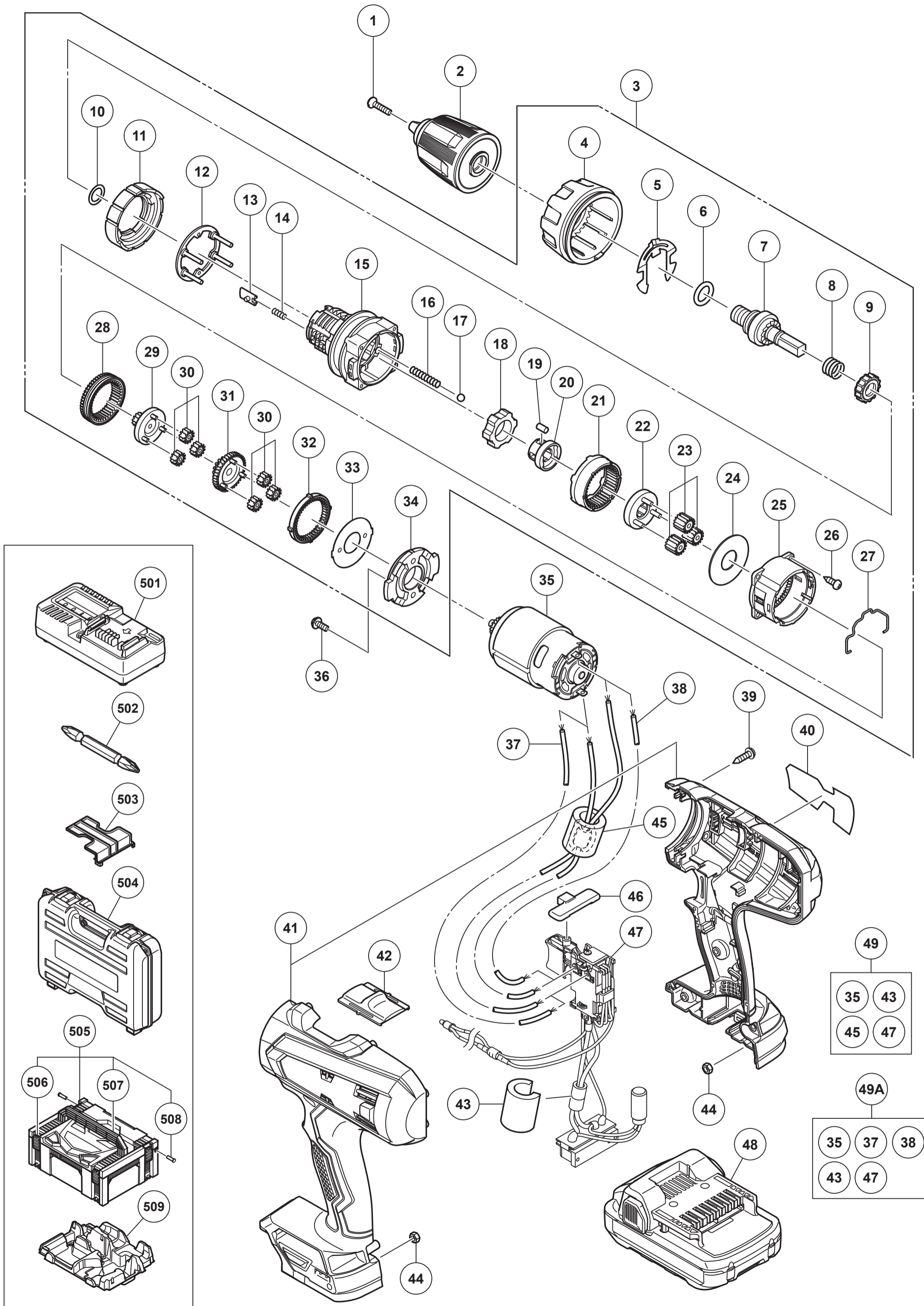


HIKOKI**CORDLESS IMPACT DRILL/COMBI DRILL DV18D**

Item No.	Code No.	Description	No. Used	Remarks
1	331966	FLAT HD. SCREW (LEFT HAND) M6X20	1	
2	378325	DRILL CHUCK 13VLRL-N (W/O CHUCK WRENCH)	1	
3	336875	GEAR BOX ASS'Y	1	INCLUD. 4-34
4	336878	CLUTCH DIAL	1	
5	327146	CLICK SPRING	1	
6	327142	O-RING	1	
7	336351	SPINDLE	1	
8	327136	SPRING (C)	1	
9	327134	RATCHET (B)	1	
10	327147	WASHER (A)	1	
11	327145	NUT	1	
12	336877	WASHER	1	
13	327135	SLIP BLOCK	2	
14	327133	STOPPER SPRING	2	
15	336876	FRONT CASE	1	
16	327143	SPRING (A)	4	
17	306936	STEEL BALL D5	4	
18	336879	LOCK RING	1	
19	335946	NEEDLE ROLLER SET (4 PCS.)	4	
20	335944	SLEEVE	1	
21	328055	RING GEAR	1	
22	327139	CARRIER	1	
23	312705	PLANET GEAR (C) SET (3 PCS.)	3	
24	312704	WASHER (A)	1	
25	335959	REAR CASE	1	
26	324357	SCREW SET D3X12 (4 PCS.)	4	
27	332017	SHIFT ARM	1	
28	332013	SLIDE RING GEAR	1	
29	332012	PINION (C)	1	
30	332019	PLANET GEAR (A) SET (6 PCS.)	6	
31	332014	PINION (B)	1	
32	332023	FIRST RING GEAR	1	
33	312716	WASHER (B)	1	
34	312698	MOTOR SPACER	1	
35	336880	MOTOR DC 18V	1	
36	317333	MACHINE SCREW (W/SP. WASHER) M4X6	2	
39	313687	TAPPING SCREW (W/FLANGE) D3X16 (BLACK)	9	
40		NAME PLATE	1	
41	378321	HOUSING (A).(B) SET	1	
42	336855	SHIFT KNOB	1	
43	337137	SUPPORT (D)	1	
44	327002	LOCK NUT M4 (BLACK)	2	
*45	337136	INTERNAL WIRE FERRITE SET	1	FOR EUROPE, TUR, SAF
46	329548	PUSHING BUTTON (A)	1	
47	336632	SWITCH TERMINAL SET	1	
48	377796	BATTERY BSL 1820M (EUROPE,AUS,NZL)	2	INCLUD. 503
*49	337193	WIRING SET	1	INCLUD. 35, 43, 45, 47
		STANDARD ACCESSORIES		
501		CHARGER (MODEL UC 18YKSL)	1	
502	983006	+ DRIVER BIT NO.2 65L	1	
503	329897	BATTERY COVER	1	
504	336642	CASE	1	
505	336471	CASE ASS'Y (STACKABLE 2)	1	INCLUD. 506-508

* ALTERNATIVE PARTS



35	43
45	47

49A		
35	37	38
43	47	