

HIKOKI

ROTARY HAMMER DH52MA

Item No.	Code No.	Description	No. Used	Remarks
1	337562	FRONT CAP	1	
2	318590	STOPPER RING	1	
3	338155	RETAINER WASHER	1	
4	338154	GRIP	1	
5	339053	RETAINER DAMPER (A)	1	
6	370669	BIT LOCK HOLDER	1	
7	339051	THRUST PLATE	1	
8	339052	RETAINER SPRING	1	
9A	371145	SPRING HOLDER (A)	1	
10	872470	O-RING (S-26)	1	
11	998471	HEX. SOCKET HD. BOLT (W/FLANGE) M5X12	1	
12	378306	CYLINDER CASE COVER	1	
13	318582	RETAINING RING D40	1	
14	338200	RETAINING RING D68	1	
15	339063	BALL BEARING 6008DDU	1	
16	338201	BEARING WASHER	1	
17	318588	OIL SEAL (NBR710)	1	
18	338199	CYLINDER CASE	1	
19	990083	HEX. SOCKET HD. BOLT (W/FLANGE) M8X35	4	
20	949859	ROLL PIN D2X8 (10 PCS.)	1	
21	338222	O-RING (C)	1	
22	338204	RETAINER DAMPER HOLDER	1	
23	338203	RETAINER DAMPER (B)	1	
24	339064	DAMPER SLEEVE	1	
25	338202	RETAINER DAMPER WASHER	1	
26	370654	BIT LOCK	2	
27	378706	RETAINER SLEEVE	1	
28	338210	NEEDLE PIN D8	8	
29	986104	O-RING	1	
30	378707	SECOND HAMMER	1	
31	370659	DAMPER WASHER	1	
32	328887	DAMPER	1	
33	378708	DAMPER HOLDER	1	
34	378302	CYLINDER	1	
35	378303	STRIKER	1	
36	328880	O-RING	1	
37	338211	SPRING HOLDER (B)	1	
38	338216	LOCK SPRING WASHER	1	
39	338217	LOCK SPRING	1	
40	338215	LOCK SLEEVE	1	
41	338212	CLUTCH SPRING	1	
42	378305	CLUTCH	1	
43	338218	SLEEVE	1	
44	338235	SLIDER	1	
45	338219	METAL (A)	1	
46	338220	METAL WASHER	1	
47	378304	BEVEL GEAR	1	
48	328880	O-RING	1	
49	328877	PISTON	1	
50	372216	PISTON PIN	1	
51	328878	CONNECTING ROD	1	
52	953121	HEX. HD. TAPPING SCREW D5X50	2	
*53	341115P	STATOR ASS'Y 220V-230V	1	INCLUD.54 FOR EUROPE,GBR

* ALTERNATIVE PARTS

HIKOKI

ROTARY HAMMER DH52MA

Item No.	Code No.	Description	No. Used	Remarks
54	945932	BRUSH TERMINAL	2	
55	375274	BEARING WASHER	1	
56	6201VV	BALL BEARING 6201VV	1	
57	378704	HOUSING ASS'Y	1	INCLUD.60,61
58	371118	BRUSH CAP	2	
59	999044	CARBON BRUSH (1 PAIR)	1	
60	371117	BRUSH HOLDER	2	
61	938477	HEX. SOCKET SET SCREW M5X8	2	
62	328918	BEARING HOLDER	1	
63	375308	TAPPING SCREW (W/FLANGE) D4X16	4	
64	333225	DUST SEAL	1	
65	333193	TAIL COVER	1	
66	302089	TAPPING SCREW (W/FLANGE) D5X20 (BLACK)	2	
67	326541	VINYL TUBE (I.D.9.5XT0.56X85)	1	
*68	322530	VINYL TUBE L55	2	FOR EUROPE,GBR (230V)
*69		VINYL TUBE (I.D.7XT0.5X30)	2	FOR EUROPE,GBR (230V)
70	999086	CARBON BRUSH (AUTO STOP TYPE) (1 PAIR)	1	
71	378896	HANDLE (A)	1	
72	310124	HANDLE DAMPER	4	
73	310123	TRANSATORY UNIT	1	
74	338162	HANDLE DAMPER HOLDER	1	
75	338175	HANDLE SHAFT	1	
76	307028	TAPPING SCREW (W/FLANGE) D4X25 (BLACK)	5	
77	373263	SEAL LOCK BUTTON BOLT M5	2	
78	991711	DISTANCE PIECE (B)	2	
*79	321537	CORD	1	(CORD ARMOR D10.7)
80	940778	CORD ARMOR D10.7	1	
81	960266	CORD CLIP	1	
82	6202DD	BALL BEARING 6202DD	1	
83	375277	DUST WASHER (B)	1	
84	378699	FAN	1	
*85	361170F	ARMATURE ASS'Y 220V-240V	1	INCLUD.84
86	333210	FAN GUIDE	1	
*87	378298	BACK COVER	1	FOR EUROPE,GBR (230V)
88	338176	BELLOWS	1	
89	337588	TRIGGER	1	
90	378897	HANDLE (B)	1	
91	337051	SWITCH	1	
92	998485	HEX. SOCKET HD. BOLT (W/FLANGE) M5X14	2	
93		NAME PLATE	1	
94	333713	TAPPING SCREW (W/FLANGE) D5X30 (BLACK)	4	
*95	378898	INTERNAL WIRE (BLACK)	1	
96	958308Z	PILLAR TERMINAL (A)	1	
*97	378850	NOISE SUPPRESSOR	1	INCLUD.98,99 FOR EUROPE,GBR,SAF,TUR,CHN
*98	317492	SUPPORT (B)	1	FOR EUROPE,GBR,SAF,TUR,CHN
*99	961419Z	TERMINAL	1	FOR EUROPE,GBR,SAF,TUR,CHN
*100	959141	CONNECTOR 50092 (10 PCS.)	1	FOR EUROPE,GBR (230V)
*101	378696	CONTROLLER ASS'Y (A)	1	INCLUD.102-105 FOR EUROPE,GBR (230V)
*102	378697	RUBBER CUSHION	2	FOR EUROPE,GBR (230V)
*103	378698	DOUBLE FACED TAPE	4	FOR EUROPE,GBR (230V)
*104	378702	TAPE	2	FOR EUROPE,GBR (230V)
*105	378701	PACKING (A)	1	FOR EUROPE,GBR (230V)

* ALTERNATIVE PARTS

HIKOKI

ROTARY HAMMER DH52MA

Item No.	Code No.	Description	No. Used	Remarks
106	376577	SIDE HANDLE ASS'Y	1	INCLUD. 107,108,113,114
107	330209	SIDE HANDLE	1	
108	376578	MOUNT ASS'Y	1	INCLUD. 109-112
109	337577	WING BOLT	1	
110	949859	ROLL PIN D2X8 (10 PCS.)	1	
111	338239	MOUNT	1	
112	949556	NUT M6 (10 PCS.)	1	
113	333227	HANDLE BOLT	1	
114	338238	BAND	1	
115	939542	RETAINING RING FOR D12 SHAFT (10 PCS.)	1	
116	338224	CRANK SHAFT	1	
117	328869	FEATHER KEY 3X3X25	1	
118	948227	RETAINING RING FOR D47 HOLE	1	
119	6204DD	BALL BEARING 6204DD	1	
120	338227	O-RING (F)	1	
121	986940	SEAL LOCK HEX. SOCKET HD. BOLT M6X45	4	
122	339050	FELT PACKING (D)	1	
123	338237	CRANK COVER	1	
124	338177	HEX. SOCKET HD. BOLT (W/FLANGE) M5X18	4	
125	378295	CHANGE LEVER	1	
126	337567	LEVER SPRING	1	
127	959149	STEEL BALL D4.76 (10 PCS.)	1	
128	878885	O-RING (S-18)	1	
129	338236	LEVER SHAFT HOLDER	1	
130	939547	RETAINING RING FOR D20 SHAFT (10 PCS.)	1	
131	338160	O-RING (A)	1	
132	338234	CHANGE PLATE	1	
133	378900	SPONGE (E)	2	
134	339062	FELT PACKING (C)	1	
135A	371179	CAP SCREW	1	
136	995396	VALVE	1	
137	338223	CRANK CASE	1	
138	328867	OIL SEAL	2	
139	338242	SLIP CLUTCH ASS'Y	1	INCLUD. 140-151
140	338229	BEVEL PINION	1	
141	944109	FEATHER KEY 3X3X8	1	
142	338230	COLLAR	1	
143	6202DD	BALL BEARING 6202DD	1	
144	313058	WASHER	1	
145	338231	WASHER (A)	1	
146	318554	GEAR HOLDER	1	
147	329095	SPRING (C)	8	
148	313057	NEEDLE PIN D6X6	8	
149	338232	SECOND GEAR	1	
150	338233	SPACER	1	
151	629VVM	BALL BEARING 629VV	1	
152	944525	BEARING WASHER (C)	1	
153	338225	FIRST GEAR	1	
154	338226	SECOND PINION	1	
155	629VVM	BALL BEARING 629VV	1	
156	338240	SEAL PACKING	1	
157	378307	GEAR COVER	1	
158	321313	SEAL LOCK HEX. SOCKET HD. BOLT M6X22	2	

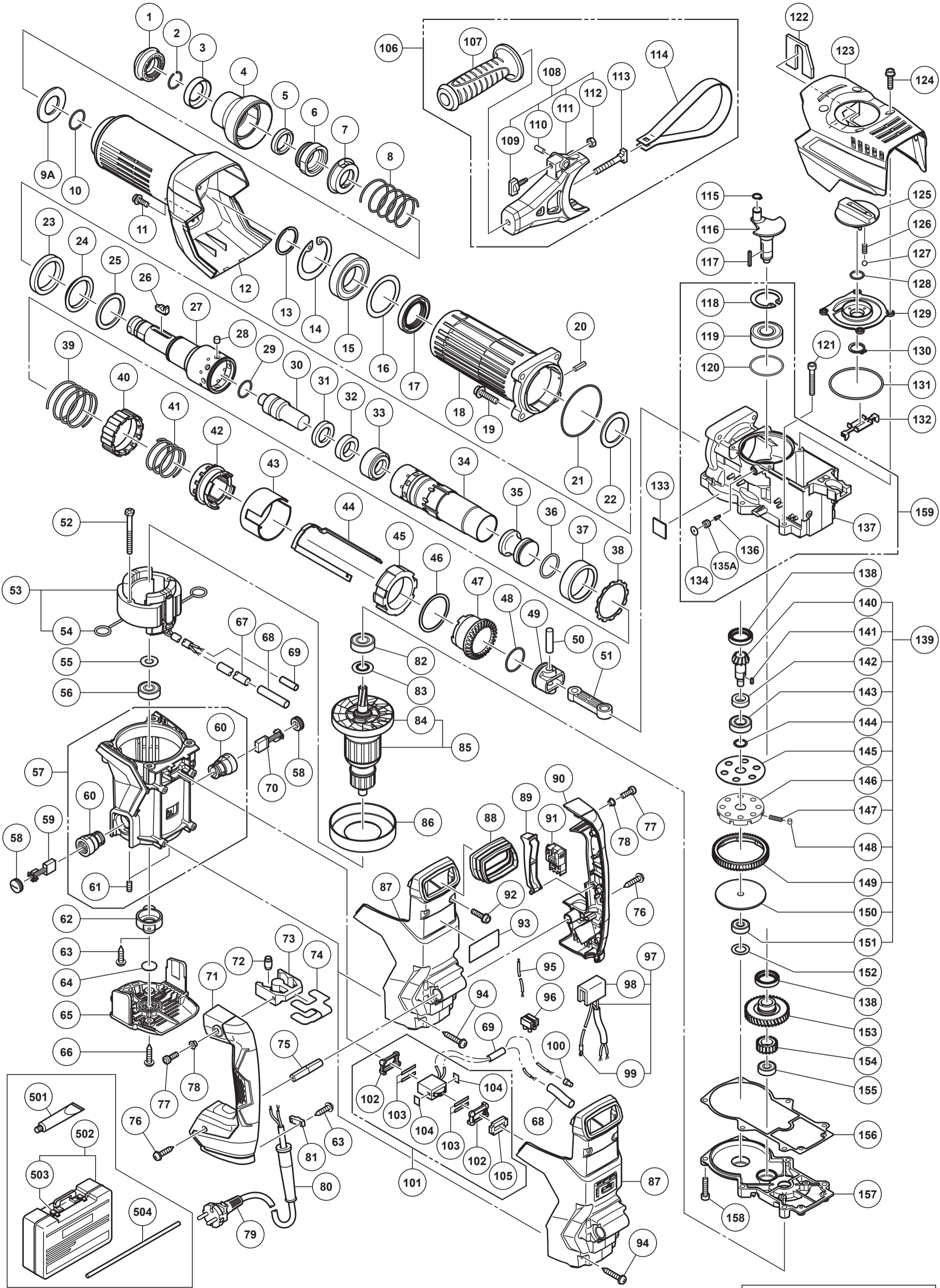
* ALTERNATIVE PARTS

HIKOKI

ROTARY HAMMER DH52MA

Item No.	Code No.	Description	No. Used	Remarks
*159	382072	CRANK CASE ASS'Y	1	INCLUD.118-120,134-137 FOR EUROPE
		STANDARD ACCESSORIES		
501	981840	GREASE (A) FOR HAMMER.HAMMER DRILL (30G)	1	
502	378308	CASE ASS'Y (PLASTIC)	1	INCLUD.503
503	372113	BUCKLE	2	
504	971786	STOPPER ROD	1	
		OPTIONAL ACCESSORIES		
601	308471	GREASE FOR HAMMER.HAMMER DRILL (70G)	1	
602	980927	GREASE FOR HAMMER.HAMMER DRILL (500G)	1	
603	320859	SYRINGE (BLOW-OUT BULB TYPE)	1	
604	318085	SYRINGE (BELLOWS TYPE)	1	
605	944477	COTTER	1	
606	313465	ADAPTER (SDS MAX) FOR SDS PLUS SHANK BIT	1	
607	313466	CORE BIT SHANK (B) SDS MAX D25-35	1	
608	313467	CORE BIT SHANK (A) SDS MAX D38-150	1	
609	956009	CENTER PIN (B) 147L FOR CORE BIT D32-35	1	
610	955165	CENTER PIN (A) 133L FOR CORE BIT D38-150	1	
611	321813	DRILL CHUCK 13VLD-D	1	
612	313468	CHUCK ADAPTER (SDS MAX)	1	
613	303334	CHUCK HANDLE	1	
614	930515	CHUCK WRENCH 10G	1	
615	313469	CHEMICAL ANCHOR ADAPTER (SDS MAX) 12.7MM	1	
616	313470	CHEMICAL ANCHOR ADAPTER (SDS MAX) 19MM	1	
617	313471	BULL POINT (SDS MAX) 280L	1	
618	313472	BULL POINT (SDS MAX) 400L	1	
619	313473	COLD CHISEL (SDS MAX) 280MM	1	
620	313474	COLD CHISEL (SDS MAX) 400MM	1	
621	313475	CUTTER (SDS MAX) W50X400L	1	
622	313476	SCOOP (SDS MAX) 400L	1	
623	313478	RAMMER (SDS MAX) 150MMX150MM	1	
624	313477	BUSHING TOOL (SDS MAX)	1	
625	313479	SHANK (SDS MAX)FOR RAMMER,BUSHING TOOL	1	
626	955994	CORE BIT 25MM	1	
627	955995	CORE BIT 29MM	1	
628	955996	CORE BIT 32MM	1	INCLUD.629
629	955997	GUIDE PLATE (FOR CORE BIT 32MM)	1	
630	955998	CORE BIT 35MM	1	INCLUD.631
631	955999	GUIDE PLATE (FOR CORE BIT 35MM)	1	
632	956000	CORE BIT 38MM	1	INCLUD.633
633	956001	GUIDE PLATE (FOR CORE BIT 38MM)	1	
634	955154	CORE BIT 45MM	1	INCLUD.635
635	955166	GUIDE PLATE (FOR CORE BIT 45MM)	1	
636	955155	CORE BIT 54MM	1	INCLUD.637
637	955167	GUIDE PLATE (FOR CORE BIT 54MM)	1	
638	956002	CORE BIT 64MM	1	INCLUD.639
639	956003	GUIDE PLATE (FOR CORE BIT 64MM)	1	
640	955157	CORE BIT 79MM	1	INCLUD.641
641	955168	GUIDE PLATE (FOR CORE BIT 79MM)	1	
642	956004	CORE BIT 94MM	1	INCLUD.643
643	956005	GUIDE PLATE (FOR CORE BIT 94MM)	1	
644	955159	CORE BIT 105MM	1	INCLUD.645
645	955169	GUIDE PLATE (FOR CORE BIT 105MM)	1	
646	956006	CORE BIT 120MM	1	INCLUD.647

* ALTERNATIVE PARTS



Rev.4
9.8.2024

MODEL
DH52MA