

# HIKOKI

## ROTARY HAMMER

Item No.	Code No.	Description	No. Used	Remarks
1	306345	FRONT CAP	1	
2	306340	STOPPER RING	1	
3	374436	GRIP	1	
4	374437	BALL HOLDER	1	
5	374435	HOLDER PLATE	1	
6	322812	HOLDER SPRING	1	
7		NAME PLATE	1	
8	335259	OIL SEAL	1	
9	6805BB	BALL BEARING 6805	1	
10	322789	PUSHING BUTTON	1	
11	317223	PUSHING SPRING	1	
12	334011	CHANGE LEVER	1	
13	878885	O-RING (S-18)	1	
14	374620	GEAR COVER	1	
15	375017	GEAR COVER ASS'Y	1	INCLUD. 14, 17
16	335800	SPRING (E)	1	
17	608VVM	BALL BEARING 608VVC2PS2L	3	
18	335300	STEEL BALL D7.0 (10 PCS.)	1	
19	374426	CYLINDER	1	
20	335265	SECOND GEAR	1	
21	374430	SPRING (B)	1	
22	301679	WASHER (A)	2	
23	948310	RETAINING RING FOR D30 SHAFT	1	
24	335262	OIL SEAL (A)	1	
25	374431	HAMMER HOLDER (B)	1	
26	374427	HOLDER SLEEVE	1	
27	374432	SECOND HAMMER	1	
28	374429	HAMMER HOLDER (A)	1	
29	322805	DAMPER (A)	1	
30	322808	O-RING (C)	1	
31	324524	DAMPER HOLDER	1	
32	322807	STOPPER RING	1	
33	374443	STRIKER	1	
34	372816	O-RING	1	
35	372817	PISTON	1	
36	335793	PISTON PIN	1	
37	335794	PISTON WASHER	2	
38	374621	SECOND SHAFT	1	
39	335251	WASHER (C)	1	
40	323182	CLUTCH SPRING	1	
41	375022	CLUTCH	1	
42	331315	WASHER	1	
43	335252	CHANGE PLATE	1	
44	335249	RECIPROCATING BEARING	1	
45	374441	FIRST GEAR	1	
46	374442	BEARING WASHER	1	
47	335245	O-RING D72.2	1	
48	374433	INNER COVER	1	
49	334008	AIR CAP	1	
50	324543	FELT PACKING (A)	1	
51	322816	FELT PACKING	1	
52	322818	PACKING WASHER	1	
53	876796	O-RING (P-22)	1	

\* ALTERNATIVE PARTS

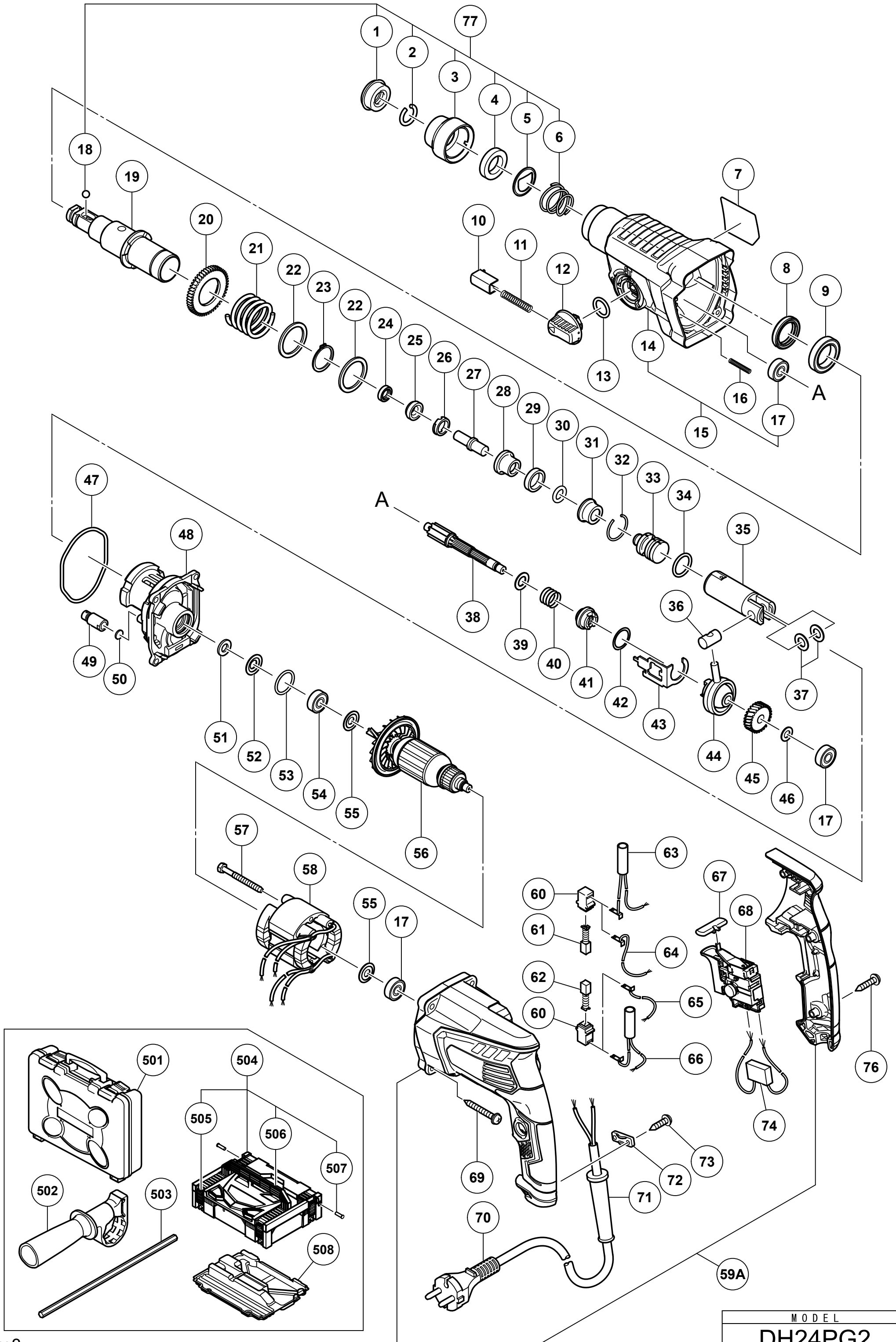
# HIKOKI

## ROTARY HAMMER

Item No.	Code No.	Description	No. Used	Remarks
54	608DDM	BALL BEARING 608DD	1	
55	982631	WASHER (A)	2	
*56	361110C	ARMATURE (C) 110V	1	
*56	361110E	ARMATURE (C) 220V-230V	1	
57	981824	HEX. HD. TAPPING SCREW D4X45	2	
*58	341031H	STATOR (C) 110V	1	
*58	341031C	STATOR (C) 110V (W/CR)	1	FOR TPE
*58	341031K	STATOR (C) 220V-230V	1	
59A	376298	HOUSING SET	1	
60	955203	BRUSH HOLDER	2	
61	999041	CARBON BRUSH (1 PAIR)	1	
62	999072	CARBON BRUSH (AUTO STOP TYPE) (1 PAIR)	1	
63	374615	CHOKE COIL (BROWN)	1	FOR EUROPE, RUS, NZL, CHN, TPE
64	374613	INTERNAL WIRE (BROWN)	1	FOR UAE, HKG, THA, INA, IND
65	374612	INTERNAL WIRE (BLUE)	1	FOR UAE, HKG, THA, INA, IND
66	374614	CHOKE COIL (BLUE)	1	FOR EUROPE, RUS, NZL, CHN, TPE
67	322853	PUSHING BUTTON	1	
*68	374611	SWITCH 100V-127V	1	
*68	374610	SWITCH 220V-240V	1	
69	301654	TAPPING SCREW (W/FLANGE) D5X35	4	
*70	500247Z	CORD	1	(CORD ARMOR D8.8)
*70	500234Z	CORD	1	(CORD ARMOR D8.8) FOR INA, IND
*70	500423Z	CORD	1	(CORD ARMOR D8.8) FOR UAE, HKG (220V)
*70	930051	CORD	1	(CORD ARMOR D10.1) FOR HKG (110V)
*70	500439Z	CORD	1	(CORD ARMOR D8.8) FOR NZL
*70	500468Z	CORD	1	(CORD ARMOR D8.8) FOR THA
*70	500496Z	CORD	1	(CORD ARMOR D8.8) FOR CHN
*70	323974	CORD	1	(CORD ARMOR D10.1) FOR TPE
*71	953327	CORD ARMOR D8.8	1	
*71	938051	CORD ARMOR D10.1	1	
72	937631	CORD CLIP	1	
73	984750	TAPPING SCREW (W/FLANGE) D4X16	2	
74	930039	NOISE SUPPRESSOR	1	FOR EUROPE, RUS, NZL, CHN, TPE
76	301653	TAPPING SCREW (W/FLANGE) D4X20 (BLACK)	3	
77	375363	GRIP SET	1	INCLUD. 1-6, 18
		STANDARD ACCESSORIES		
501	374619	CASE	1	
502	324548	SIDE HANDLE	1	
503	303709	DEPTH GAUGE	1	
504	337739	CASE ASS'Y (STACKABLE 1)	1	INCLUD. 505-507
505	336472	LATCH	4	
506	336473	HANDLE	1	
507	336474	HINGE	2	
508	337741	INNER TRAY	1	
		OPTIONAL ACCESSORIES		
601	306885	DUST COLLECTOR (B) ASS'Y	1	INCLUD. 602, 610
602	986802	DUST COLLECTOR ASS'Y	1	INCLUD. 603-609
603	986803	DUST COVER	1	
604	986804	SEAL COVER	1	
605	948310	RETAINING RING FOR D30 SHAFT	1	
606	958063	WASHER	1	
607	959150	STEEL BALL D6.35 (10 PCS.)	19	
608	986805	OUTER RACE	1	

\* ALTERNATIVE PARTS





MODEL  
DH24PG2