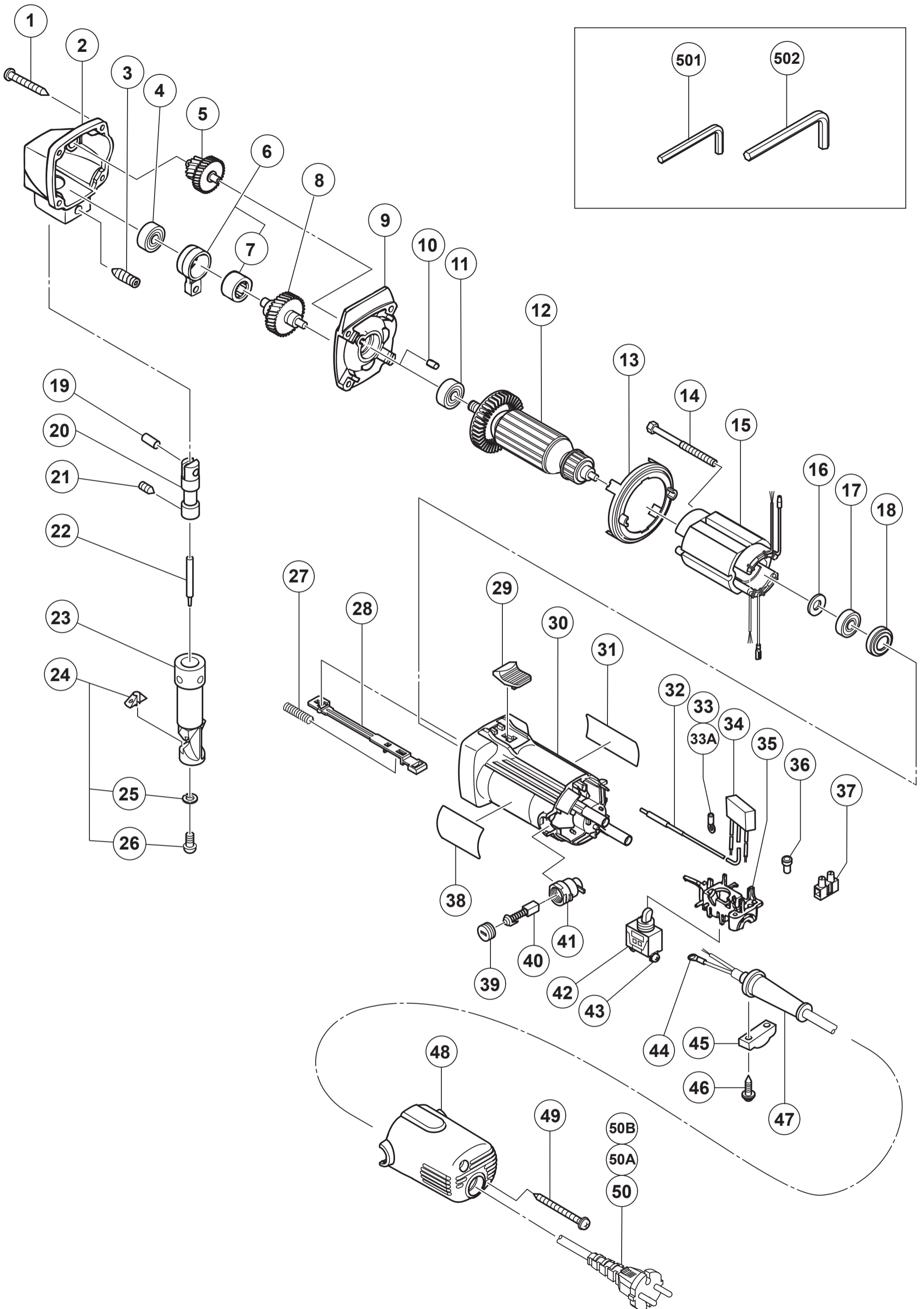


HIKOKI

NIBBLER CN16SA

Item No.	Code No.	Description	No. Used	Remarks
1	957580	TAPPING SCREW D5X30	4	
2	998033	GEAR COVER	1	
3	998008	HEX. SOCKET SET SCREW M8X20	1	
4	608VVM	BALL BEARING 608VVC2PS2L	1	
5	998036	SECOND PINION AND GEAR SET	1	
6	998004	CONNECTING ROD ASS'Y	1	INCLUD.7
7	993163	NEEDLE BEARING (M152112)	1	
8	998035	SPINDLE AND GEAR SET	1	
9	998032	INNER COVER	1	
10	931701	BEARING LOCK	1	
11	608VVM	BALL BEARING 608VVC2PS2L	1	
*12	360622E	ARMATURE 220V-230V	1	
13	306840	FAN GUIDE	1	
14	982021	HEX. HD. TAPPING SCREW D4X70	2	
*15	340567E	STATOR 220V-230V	1	
16	942204	WASHER	1	
17	626VVM	BALL BEARING 626VVC2PS2L	1	
18	309929	RUBBER BUSHING	1	
19	993546	PIN D6	1	
20	998034	PISTON	1	
21	998037	HEX. SOCKET SET SCREW M5X6	1	
*22	998030	PUNCH	1	
23	998038	DIE HOLDER	1	
24	998039	DIE ASS'Y	1	INCLUD.25,26
25	949451	SPRING WASHER M3 (10 PCS.)	2	
26	949206	MACHINE SCREW M3X14 (10 PCS.)	2	
27	314429	SPRING	1	
28	314427	SLIDE BAR	1	
29	314428	SLIDE KNOB	1	
30	314438	HOUSING ASS'Y	1	INCLUD.18
31		NAME PLATE	1	
*32	314854	EARTH TERMINAL	1	FOR NOISE SUPPRESSOR
*33	311741	TERMINAL	1	
*34	994273	NOISE SUPPRESSOR	1	FOR TPE, HKG, NGU, NZL, AUS, GBR, SAF, EUROPE, NOR, SWE, DEN, FIN, SUI, KOR
35	314432	SWITCH HOLDER	1	
*37	938307	PILLAR TERMINAL	1	FOR TPE, HKG, NGU, NZL, AUS, GBR, SAF, EUROPE, NOR, SWE, DEN, FIN, SUI, KOR, USA, CAN
38		BRAND LABEL	1	
39	936551	BRUSH CAP	2	
40	999021	CARBON BRUSH (1 PAIR)	2	
41	313777	BRUSH HOLDER	2	
42	314603	SWITCH (1P SOLDER TYPE)	1	
43	305499	MACHINE SCREW (W/WASHER) M3.5X6	2	
*44	980063	TERMINAL	1	FOR CORD
45	937631	CORD CLIP	1	
46	984750	TAPPING SCREW (W/FLANGE) D4X16	2	
*47	953327	CORD ARMOR D8.8	1	
48	314433	TAIL COVER	1	
49	301815	TAPPING SCREW (W/FLANGE) D4X45 (BLACK)	2	
*50B	500492Z	CORD	1	(CORD ARMOR D8.8) FOR SUR, INA, SAF, EUROPE NOR, SWE, DEN, FIN, IND
		STANDARD ACCESSORIES		

* ALTERNATIVE PARTS



MODEL
CN16SA