

HIKOKI

CIRCULAR SAW C3609DUM

Item No.	Code No.	Description	No. Used	Remarks
1	382939	TAIL COVER (B)	1	
2	382957	CONTROLLER ASS'Y	1	INCLUD. 14, 15
3	997841	MACHINE SCREW (W/WASHERS) M5X50 (BLACK)	4	
4	301653	TAPPING SCREW (W/FLANGE) D4X20 (BLACK)	12	
5	382936	HOUSING	1	
6		NAME PLATE	1	
7	379531	KNOB	1	
8	301631	SPRING (F)	2	
9	931701	BEARING LOCK	1	
10	382937	HANDLE COVER	1	
11	382942	TRIGGER	1	
12	379415	SWITCH	1	
13	379349	MV LABEL (A) (2)	1	
14	379931	BATTERY TERMINAL	1	
15	379283	FUSE	1	
16	382938	TAIL COVER (A)	1	
17	379350	MV LABEL (B) (2)	1	
18	959141	CONNECTOR 50092 (10 PCS.)	3	
19	373516	RUBBER BUSH	1	
20	375110	WASHER	1	
21	341216	STATOR SENSER PCB SET	1	
22	981421	HEX. HD. TAPPING SCREW D4X55	2	
23	382941	FAN GUIDE	1	
24	361246	ROTOR ASS'Y	1	INCLUD. 25, 26
25	606ZZM	BALL BEARING 606VV	1	
26	6202VV	BALL BEARING 6202VVCMP2L	1	
27	382949	LOCK LEVER	1	
28	303792	RUBBER RING	1	
29	334225	SPRING	1	
30	337080	CUSHION	1	
31	377945	FLAT HD. SCREW M6X20	1	
32	370276	SPINDLE AND GEAR SET	1	
33	370275	BEARING HOLDER	1	
34	303797	SEAL LOCK FLAT HD. SCREW M6X14	2	
35	6202VV	BALL BEARING 6202VVCMP2L	1	
36	382951	ARM	1	
37	382954	BOLT (SQUARE) M8	1	
38	382953	RIVING KNIFE	1	
39	370287	HEX. SOCKET HD. BOLT M8	2	
40	382935	GAUGE PLATE (A)	1	
41	382934	GEAR COVER ASS'Y	1	INCLUD. 40
42	670514	RETAINING RING (E-TYPE) FOR D10 SHAFT	1	
43	382948	LEVER (LINK)	1	
44	382955	LOCK NUT	1	
45	318929	WASHER (F)	1	
46	382950	LINK	1	
47	382943	BUSHING	1	
48	370543	RETURN SPRING	1	
49	370277	BEARING COVER	1	
50	992013	SEAL LOCK FLAT HD. SCREW M5X14	2	
*51	370272	WASHER (A)	1	
52	935196	MACHINE SCREW (W/WASHERS) M4X12 (BLACK)	1	
53	383164	LOWER GUARD	1	

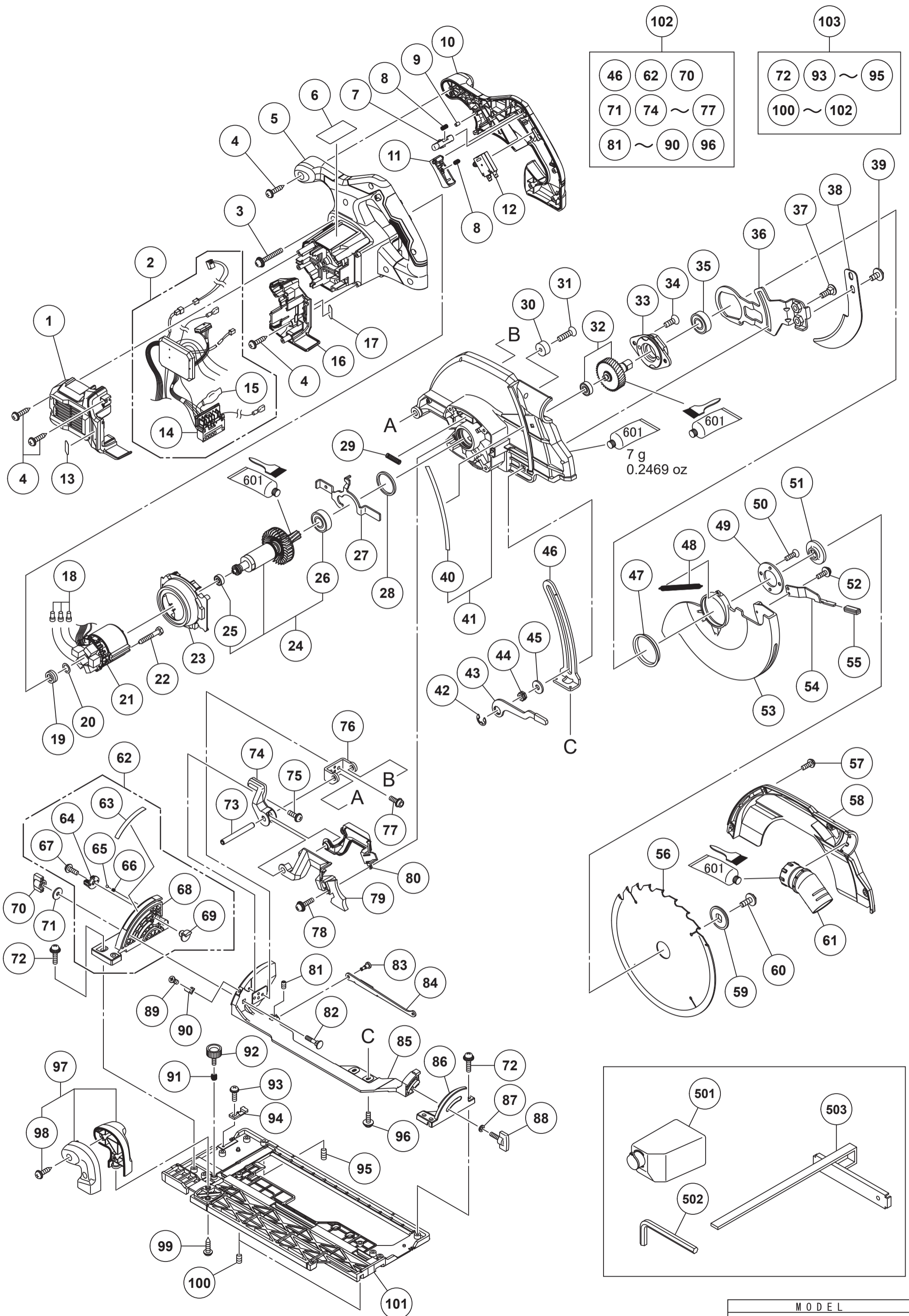
* ALTERNATIVE PARTS

HIKOKI

CIRCULAR SAW C3609DUM

Item No.	Code No.	Description	No. Used	Remarks
54	382944	LEVER (LOWER GUARD)	1	
55	382945	LEVER CAP	1	
*56	382812	TCT SAW BLADE 235MM-D30 HOLE-NT24	1	
57	951039	MACHINE SCREW (W/SP. WASHER) M4X12	4	
58	382933	SAW COVER	1	
59	370279	WASHER (B)	1	
60	324662	HEX. SOCKET HD. BOLT M8X15.5	1	
61	379613	EXHAUST NOZZLE	1	
62	382958	BEVEL PLATE (A) ASS'Y	1	INCLUD. 63-69
63	382963	GAUGE PLATE (B)	1	
64	382960	BEVEL KNOB	1	
65	959155	STEEL BALL D3.97 (10 PCS.)	1	
66	382961	SPRING D3.8X6	1	
67	333781	MACHINE SCREW (W/WASHER) M4X12 (BLACK)	1	
68	382959	BEVEL PLATE (A)	1	
69	382962	BEVEL STOPPER	1	
70	380791	WING NUT M6	1	
71	318452	WASHER (G)	1	
72	678653	MACHINE SCREW (W/WASHERS) M5X14 (BLACK)	7	
73	382940	ROLL PIN D8X70	1	
74	382956	FLOW GUIDE (A).(B) SET	1	
75	315500	MACHINE SCREW (W/WASHER) M4X8 (BLACK)	1	
76	382952	BEVEL PLATE (C)	1	
77	383165	HEX. SOCKET HD. BOLT (W/FLANGE) M5X12	2	
78	993539	MACHINE SCREW (W/WASHERS) M4X16	2	
79	383166	FLOW GUIDE (C)	1	
80	383167	FLOW GUIDE (D)	1	
81	319541	SEAL LOCK HEX. SOCKET SET SCREW M5X6	1	
82	383168	BOLT (SQUARE) M6	1	
83	382947	STEP PIN D5	1	
84	382965	PLATE (B)	1	
85	382932	LINK PLATE	1	
86	382964	BEVEL PLATE (B)	1	
87	949425	WASHER M6 (10 PCS.)	1	
88	322959	WING BOLT M6X22	1	
89	380795	SPECIAL BOLT	1	
90	380794	INDICATOR	1	
91	324876	SPRING	1	
92	379538	KNOB BOLT M6X17	1	
93	315500	MACHINE SCREW (W/WASHER) M4X8 (BLACK)	1	
94	380797	GUIDE PIECE	1	
95	382231	NYLOCK SET SCREW M6	1	
96	935196	MACHINE SCREW (W/WASHERS) M4X12 (BLACK)	2	
97	380799	SUB HANDLE ASS'Y	1	INCLUD. 98
98	307811	TAPPING SCREW (W/FLANGE) D4X16 (BLACK)	2	
99	307811	TAPPING SCREW (W/FLANGE) D4X16 (BLACK)	2	
100	382946	NYLOCK SET SCREW M6X7	2	
101	382930	BASE	1	
102	382931	LINK PLATE ASS'Y	1	INCLUD. 46, 62, 70, 71, 74-77, 81-90, 96
103	382929	BASE ASS'Y	1	INCLUD. 72, 93-95, 100-102
		STANDARD ACCESSORIES		
501	379266	DUST BAG	1	
502	872422	HEX. BAR WRENCH 6MM	1	

* ALTERNATIVE PARTS



- 102
- | | | |
|---------|---------|----|
| 46 | 62 | 70 |
| 71 | 74 ~ 77 | |
| 81 ~ 90 | 96 | |

- 103
- | | |
|-----------|---------|
| 72 | 93 ~ 95 |
| 100 ~ 102 | |

MODEL
C3609DUM(1/2)

